

WORKFLOW XMF

an open, modular, scalable workflow solution that uses Adobe's PDF print engine

FUJIFILM



FUJIFILM Workflow XMF

INCREASE PRODUCTIVITY, QUALITY, AND EFFICIENCY

Advanced JDF, APPE, cross-media workflow at the heart of your business

Workflow has developed into a structured suite of productivity tools and, with the introduction of FUJIFILM Workflow XMF, there's a solution that addresses the needs of today's printers and the challenges of shorter print runs, increasingly complex jobs and quick turnarounds.

FUJIFILM Workflow XMF was built to help your business thrive and it offers the flexibility and ease-of-use that you need to maximize your productivity, quality and efficiency.

Workflow XMF Features:

- Pure PDF workflow for maximum performance and fidelity
- Native JDF architecture for maximum flexibility
- Integrated imposition for productivity and accuracy
- Intelligent automation to maximize quality and throughput
- Cross-media capability for offset and digital presses

The FUJIFILM Workflow XMF advantage

Workflow is a crucial function at the heart of a print business, whatever its size. With FUJIFILM Workflow XMF you can maximize your capacity and resources, increasing efficiency by handling late changes to content, media or press type with minimum impact on production time and cost. FUJIFILM Workflow XMF enables you to respond rapidly to your customers' changing demands and to develop new business demands.

FUJIFILM Workflow XMF is built from the ground up on industry-standard technologies such as JDF and the Adobe PDF Print Engine. XMF provides printers the flexibility and ease-of-use they need to increase their productivity, quality and efficiency.

Pure PDF workflow

XMF's 'Pure PDF' means that original PDF content is preserved throughout the workflow, with instructions for processes such as imposition stored as JDF data in an associated JDF Job Bag. This clean PDF implementation requires no internal conversions or file 'flattening' to carry out job processing. PDF content and JDF instructions are referenced at the rendering stage, resulting in a device-independent workflow that allows files to be easily repurposed for different output processes with minimal impact on production and no compromise in respect to original design intent. For jobs that do not arrive as press-ready PDFs, XMF includes an integrated Adobe Normalizer for conversion to PDF, increasing automation and saving the cost of conversion tools.

JDF by design

XMF isn't just built on JDF, it *is* JDF. This gives XMF great flexibility in reacting to changes or re-targeting jobs from offset to digital or vice-versa. And because it uses Adobe's PDF Print Engine, it is possible to achieve huge increases in RIP speed and output performance.

Imposition inside

XMF incorporates a fully integrated FUJIFILM imposition engine, avoiding the bottleneck imposed by workflow solutions that rely on external applications. With XMF you can create and edit impositions live from within the workflow via dynamic templates, easily changing parameters as required. This results in a far smaller set of templates to manage, saving time and reducing the chance of error. XMF can also import JDF templates from popular imposition applications for direct use or further editing.

Intelligent automation

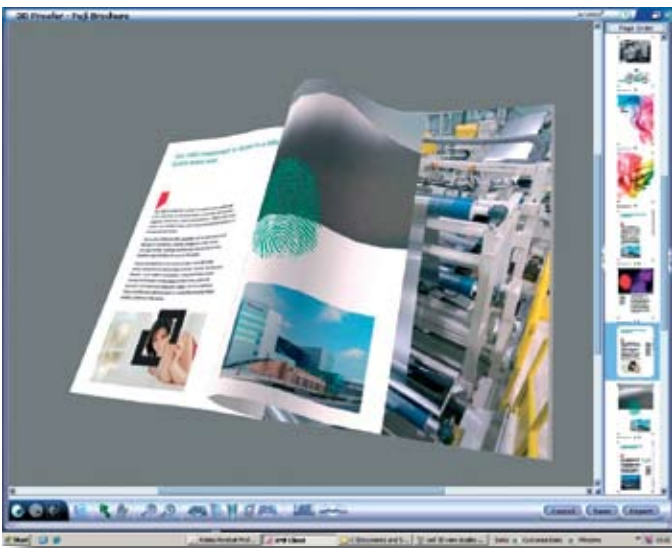
Not only does XMF apply intelligent automation at the end of the prepress process when it allocates jobs to different presses, it applies it at the job input and pre-flighting stage too. XMF makes skilled decisions on behalf of the user, checking and correcting files, speeding up job preparation and freeing operators for other tasks.

Cross-media capability

Whether you currently use digital print, or have yet to add it, XMF was designed to support all types of output devices. Making late changes from one format or type of press to another is as simple as a single mouse click, with imposition and other finishing-related specifications updated on-the-fly. Whether it's just a change in press gripper height or a complete device and imposition change from eight-up offset to B3 digital, XMF can accommodate it without having to rework the job.

XMF shows impositions for each press, with detailed control.





XMF's unique 3D digital mock-up allows both you and your customers to see how the finished job will appear.

Ease of use

XMF is designed so that anyone on the production team can use it, while hierarchical access ensures that job setups can't be modified except by authorized users. Expert profiles and job templates make it easy to build standardized and repeatable workflows without the need for a skilled user to manage or initiate each job. Operators can then submit, monitor and preview jobs at any point in the workflow via an easy-to-understand single-window client interface.

3D visualization and proofing

XMF's unique 3D proofing capability allows you to create a dynamic simulation of the finished product before the job is processed. An interactive 3D proof can be sent to customers to view their job as a virtual publication in which they can turn pages, checking layout and color; even spot varnishes and stock choices can be simulated. As well as assisting in visualization, this acts as an additional check before any media or production costs have been incurred.



Workflows are built graphically via a simple interface.

XMF Remote

XMF Remote can be added for remote job submission and remote soft proofing capabilities. Full annotation and reporting tools are included in this integrated solution.

Remote gives your customer the ability to upload jobs into XMF, process them according to the job parameters set and view and approve soft proofs all from a web browser based interface and without operator intervention. XMF Remote is a secure, automated, full featured soft proofing solution.

A sound long-term investment

XMF is based on open standards, so it will remain compatible with new print technologies, preserving your investment for years to come. As your business grows, XMF's modular and scalable architecture will allow you to increase capacity and productivity, and to expand your range of services.

XMF is fully scalable and suitable for printers with minimal press equipment as well as larger printers requiring additional RIPs and processing speed.



The Adobe partnership

Fujifilm and Adobe have been partners for over 15 years, selling more than 10,000 products as a result of the partnership.

Adobe is the innovator of PDF technology, and is continuing to evolve the PDF workflow from creation to print. Fujifilm is renowned for the expertise in workflow, digital imaging and worldwide customer support. and it is clear to see why the partnership has been and continues to be a success.

Our partnership with Fujifilm has brought success to both of our organizations. Adobe relies on innovative partners to complete the link between creative design and print. Fujifilm has successfully developed a new workflow system based on the PDF Print Engine and JDF. The Fujifilm workflow provides a comprehensive connection between Adobe Creative Suite and the needs of the print service provides.

*Don Walker, senior director
Product Marketing and Business Development, Adobe*

XMF AT A GLANCE

Press streams/fast press change - Allows an entire job to be reflowed to an alternative target press, switching the entire workflow quickly and easily.

Adobe PDF Print Engine - The latest Adobe PDF Print Engine technology is at the heart of Fujifilm Workflow XMF offering native support for the latest Adobe features along with end-to-end PDF processing.

JDF architecture - Fujifilm Workflow XMF is built entirely around JDF. This means you receive a future proofed solution with ease of connectivity and integration between XMF and third party applications.

JDF job bag - XMF has the ability to export jobs or workflow settings within a JDF job bag. This allows connectivity with other workflows and also automated job submission from Adobe applications allowing PDFs to be added to a JDF job bag and submitted to XMF.

Flexible viewing options - XMF contains an integrated Contone & Bitmap viewer allowing pre & post RIP comparison. Imposition, single page and a unique 3D viewing option are supplied as standard. 3D proofs can be exported to clients to show a digital mock-up of the finished results.



FUJIFILM Graphic Systems U.S.A., Inc.
850 Central Ave., Hanover Park, IL 60133
800.877.0555
www.fujifilmgs.com



FUJIFILM Graphic Systems Canada
600 Suffolk Court, Mississauga, ON L5R 4G4
905.890.6611/1.800.263.5018
www.fgsc.com

Specifications are subject to change without notice. The name FUJIFILM and the FUJIFILM logo are trademarks of FUJIFILM Corporation. All other trademarks shown are trademarks of their respective owners. All rights reserved.

THE FUJIFILM GREEN POLICY

We at Fujifilm believe that “sustainable development” of the Earth, mankind, and companies in the 21st century is an issue that must be addressed with the highest priority. As a socially responsible corporation, we actively undertake corporate activities with our environmental values in mind. We strive to be a dedicated steward of the environment and assist our customers and corporate partners in doing the same.



FUJIFILM

xmf_082318