

OUTPUT DIRECTOR

a workflow solution that produces an industry standard 1-bit tiff. the market.

FUJIFILM

Output Director Workflow Solution

WORKFLOW
high quality fujifilm output.



Output Director is a software application that delivers 1-bit TIFF files to a range of highly-productive, industry-leading Fujifilm platesetters and imagesetters. Third party workflows which support 1-bit tiff output can now take advantage of the capabilities of the high quality Fujifilm output devices.

Output Director Features:

- **Automation** — standalone software provides automated workflow to output engine
- **Data is transferred using industry standard file format (1-bit TIFF 6.0)**
- **Flexible calibration** — Fujifilm imagesetters or platesetters can be calibrated using current workflow tools for optimal quality on press
- **Simple interface between systems via shared Drop Folder** thus reducing compatibility issues between systems

FORMATS FROM COMPETITIVE WORKFLOW SYSTEMS

While Output Director is able to receive 1-bit TIFF files from third-party workflows, it is the responsibility of the workflow to provide proper, calibrated 1-bit TIFFs. For Output Director to output successfully, the following criteria must be met:

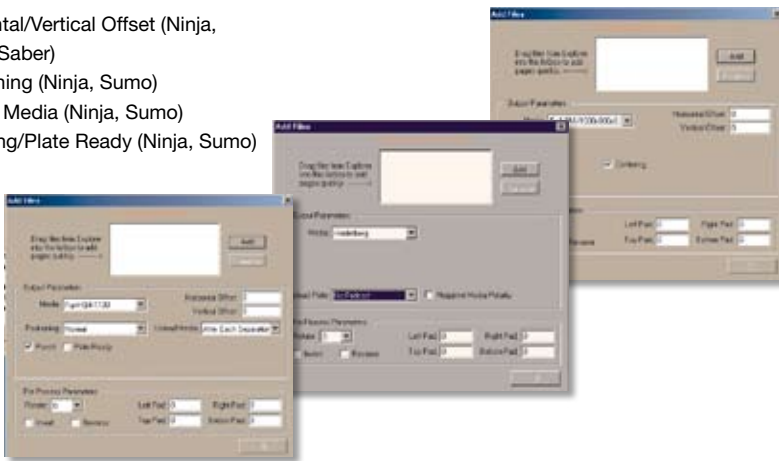
- Screening provided by third-party workflows provides quality output on the target device.
- The resolutions supported are compatible.
- The 1-bit TIFF files can be calibrated to provide the correct range for the output device.
- The third-party workflow is able to provide Output Director 1-bit TIFF files at an acceptable rate.

Output Director

Workflow Software

The Add Files menu allows the operator to select parameters. The following Output parameters are defined:

- Media
- Horizontal/Vertical Offset (Ninja, Sumo, Saber)
- Positioning (Ninja, Sumo)
- Unload Media (Ninja, Sumo)
- Punching/Plate Ready (Ninja, Sumo)

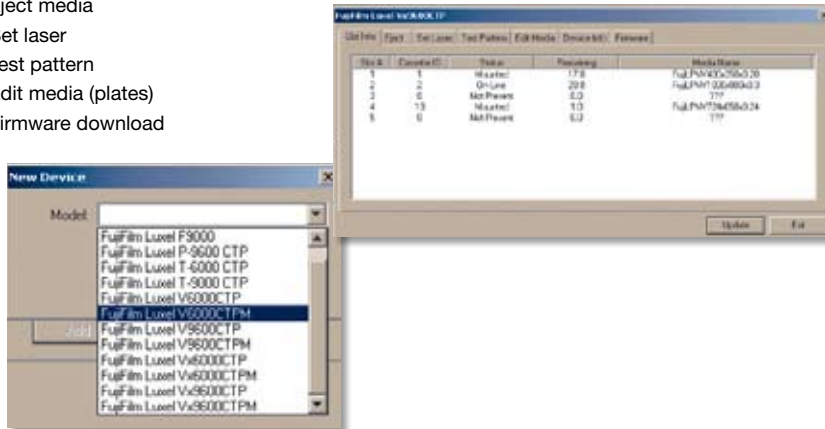


ENGINE CONTROL

Engine Control is provided by the output engine selected.

The following parameters can be selected:

- Slot Info (cassette or media information)
- Eject media
- Set laser
- Test pattern
- Edit media (plates)
- Firmware download



SPECIFICATIONS:

OUTPUT DIRECTOR

FILE FORMATS

- 1-bit TIFF 6.0

FILE COMPRESSIONS

- LZW
- Group 4
- Packbits

FILE INPUT

- Controlled through Hot Folders or "Add Files" menu

SUPPORTED DEVICES

Platesetters

- Javelin Series
- Dart Series
- Violet Saber Series

Filmsetters

- F-9000 (Sumo)
- F-6000 (Ninja)

THE FUJIFILM GREEN POLICY

We at Fujifilm believe that "sustainable development" of the Earth, mankind, and companies in the 21st century is an issue that must be addressed with the highest priority. As a socially responsible corporation, we actively undertake corporate activities with our environmental values in mind. We strive to be a dedicated steward of the environment and assist our customers and corporate partners in doing the same.



FUJIFILM group
Green Policy

FUJIFILM

outputdirector_080925